

# HELLENIC MUSEUM

VENUE INFORMATION PACK  
2022 - 23





# M PAVILION + EASTERN COURTYARD

Discover this garden oasis in the centre of Melbourne's CBD.



# EXQUISITE SPACES...

## M PAVILION + EASTERN COURTYARD

The M-Pavilion, designed by architect Sean Godsell, won the 2015 Australian Institute of Architects award before relocating to the gardens of the Museum. Describing the building's daily opening ceremony, The Wall Street Journal said: "The pavilion's beauty lies in its movement. Every morning, pneumatic arms lift the walls and roof, opening the space underneath". In addition, the eastern courtyard is a versatile space that can host occasions ranging from cocktail functions, to seated dinners and theatre style events.

### VENUE HIRE COST

Exclusive use of this stunning space and surrounding courtyard is available.

- + \$1,450 for a half day
- + \$2250 for a full day
- + \$2750 evening rate

## AUDIO VISUAL

A simple meeting package is available for \$1,000 including...

- + speakers and microphone
- + laptop
- + stage
- + lectern
- + 2 x 80 inch TV screens.

Your dedicated Showtime Event Group Producer can source any additional equipment required, working in partnership with the Museum's provider, Light Dimensions Pty Ltd.

## FURNITURE

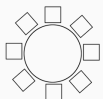
The venue has a lectern, black Bentwood chairs and wooden trestle tables.

## SECURITY

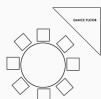
Security is required for all of our events. 1 Guard is required per 50 guests.

## AVAILABILITY

Available now



120



80



180



500



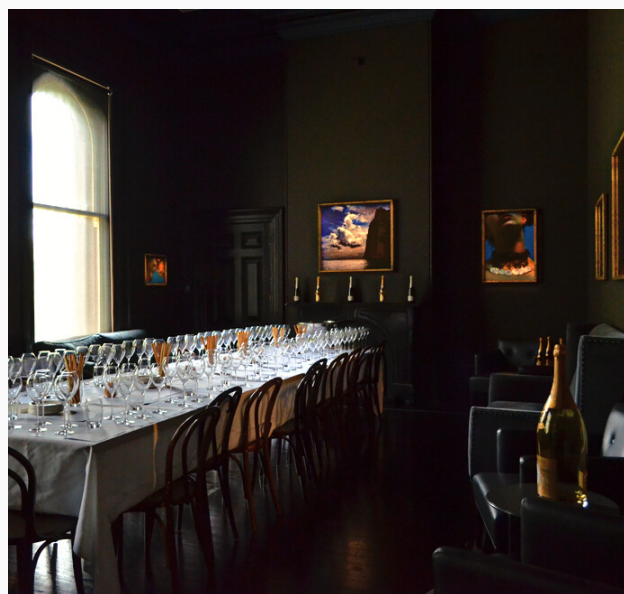
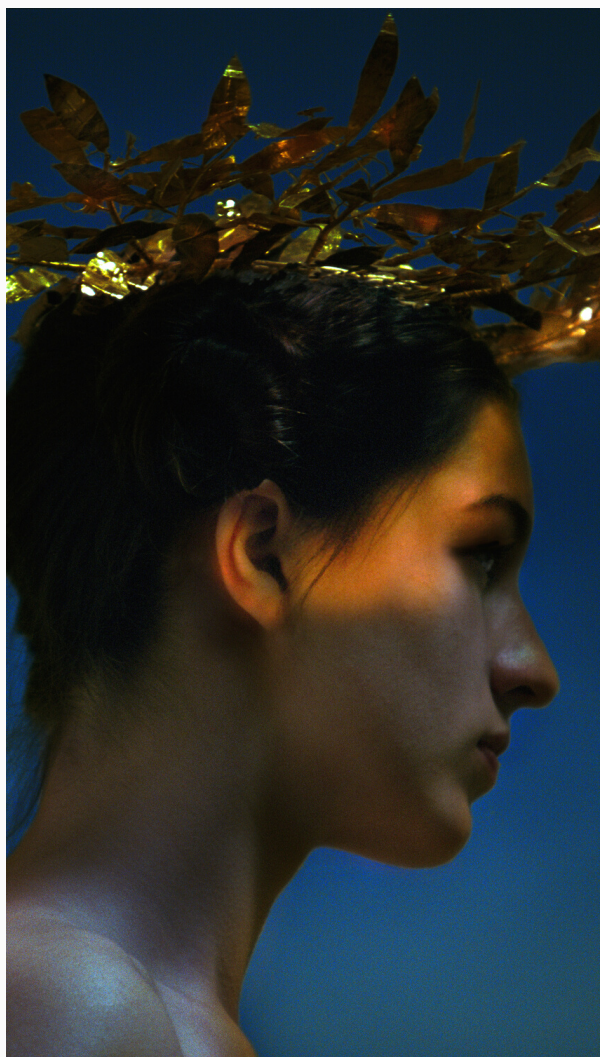


Hellenic Museum East Courtyard



# HENSON GALLERY

One of Melbourne's best kept secrets.  
Surprise and delight your guests with an  
intimate dining experience.





# TIMELESS + SOPHISTICATED

## HENSON GALLERY

One of Melbourne's most breathtaking private dining rooms, the Henson Gallery houses ONEIROI, a permanent exhibition by Australian photographer Bill Henson.

The opulent feel of the space is complemented by the artist's use of lighting, creating an atmospheric environment bridging the gap between dream and reality.

## VENUE HIRE COST

Exclusive use of this stunning space for the evening, including access to the upper floor galleries

+ \$1,750

## FURNITURE

The venue has black Bentwood chairs, wooden trestle tables for seated service and a lounge set.

## AUDIO VISUAL

A simple meeting package is available for \$1,000 including...

- + speakers and microphone
- + laptop
- + stage
- + lectern
- + 2 x 80 inch TV screens.

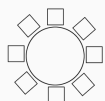
Your dedicated Showtime Event Group Producer can source any additional equipment required, working in partnership with the Museum's provider, Light Dimensions Pty Ltd.

## SECURITY

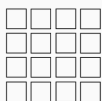
Security is required for all of our events. 1 Guard is required per 50 guests.

## AVAILABILITY

Available after 5pm daily.  
Available during the day,  
subject to Museum approval.



30



60



60









## UNIQUE EXPERIENCES...

Every event is unique, and at Showtime Event Group we believe that your event experience begins from the moment we start planning together. So much more than a caterer, all our catering clients are allocated a dedicated Event Producer free

of charge to lend their considerable experience to providing floor plans, run sheets and sourcing your styling and entertainment options. From initial enquiry, to on the day execution, our team live to make the process as simple and enjoyable as possible.

"People will forget what you said, people will forget what you did, but people will never forget how you made them feel."

Maya Angelou





## ENGAGE WITH MUSEUM COLLECTIONS

During opening hours, event guests can access the Museum and its collections at the discounted rate of \$10pp. Exclusive access after 4pm is available for \$20pp including dedicated docents. Interactive experiences can be tailored on request.

Offer your guests a bespoke Curator's Dinner experience, where art food, wine and culture meet.

# GLOBALLY INSPIRED CATERING

Showtime Event Group offers a range of Classic, Premium and Degustation menus to suit all tastes and budgets. Get in touch, and let us tailor a proposal to meet your requirements. Greek inspired and plant-based menus are also available. A little taster of our extensive menus below:

## ENTREE

Fior di burrata, pea and mint puree, slow cooked cherry tomato, crushed peas, white balsamic vinaigrette  
V, GF, NF

Ocean trout sashimi, grapefruit, radish wafers, wasabi cream, yuzu pearls  
GF, NF

Sous vide baby octopus, lemon and garlic butter beans, charred tomato and capsicum, apple balsamic reduction  
GF, DF, NF

Garlic and thyme bresola, charred capsicum and caper salad, baked shallots, feta mousse  
GF, NF

Baked feta, cherry tomato, oregano, toasted pita chips, fresh herb salad  
V, NF

## MAIN

Charred eye fillet, smoked mushroom purée, confit potato, thyme jus  
GF, NF

Lemon thyme chicken breast, creamy mash, dutch carrot, herb white wine cream sauce  
GF, DF, NF

Moroccan spiced mackerel, toasted almonds, romesco sauce, roast kipfler potatoes, slow cooked cherry tomatoes  
GF, DF

Preserved lemon barramundi, parsley and olive pesto sauce, grilled asparagus, roast capsicum and crushed kipfler salad  
GF

Braised lamb shank, parsley and garlic mashed potatoes, broccolini, sticky date jus  
GF, NF





# SUGAR + SPICE + ALL THINGS NICE

---

## DESSERT

Burnt honey yoghurt mousse, aromatic charred pineapple, mixed nut praline  
V, GF

Apple and cinnamon compote, sweet granola, lemon thyme, crème patisserie, green apple coulis  
V, GF

Broken chocolate gâteau, mud cake pieces, raspberry, gianduja mousse, whipped caramel fudge  
V

Vanilla and basil panna cotta, raspberry, freeze dried lychee, toasted coconut  
V, GF, NF

Sticky fig pudding, honey fig and pistachio ice cream, tahini caramel  
V

## CANAPES

Potato gaufrettes, white bean and rosemary dip, crispy bacon, aromatised olive oil  
GF, NF, DF

Cured beetroot and pear, goat curd, omega seed croute  
V, NF

Air dried bresaola, semi dried tomato pesto, fried capers, sourdough crostini

Miniature beef Wellington, seeded mustard, red wine glaze  
NF

Beef polpette with tomato basil sugo, shaved grana Padano  
NF

Sesame prawn toast, ginger and soy dipping sauce



Live in the moment.

# FOOD + BEVERAGE

## 01

### CONFERENCE DELEGATE MENUS

3 Tiers - \$85 for full day

Starting from \$21pp for morning tea

## 02

### SEATED DINING

4 Tiers + Greek inspired menu

Starting from \$66pp for 2 courses

## 03

### ROVING AND GRAZING

Canapes, roving desserts,  
manned food stations +  
grazing stations available.

Starting from \$29pp for 1 Hour

## 04

### BEVERAGE PACKAGES

3 Tiers + Sommelier's Selection

Starting from \$19pp for 30 mins

\*Minimum Catering Spends apply, based  
on your event date and service period.







## CONTACT US

SHOWTIME EVENTS GROUP  
events@seg.melbourne  
03 9682 1777

HELLENIC MUSEUM  
info@hellenic.org.au  
03 8615 9016

280 William Street,  
Melbourne, Victoria 3000



# ARTISTIC EVENT PARTNERS

## BRING YOUR EVENT TO LIFE WITH DANN EVENT HIRE

As a forward thinking event hire company, we specialise in designing and manufacturing our own cutting-edge furniture, hospitality and impressive marquee structures for rent. We continuously source the new, the unseen and the brave to bring bold visions to life. Our essence is creative collaborative design, so let's bring your vision and special occasion to life.

[DANNEVENTHIRE.COM.AU](http://DANNEVENTHIRE.COM.AU)

Contact us.  
1300 131 299  
[sharon.c@danneventhire.com.au](mailto:sharon.c@danneventhire.com.au)

**DANN**  
EVENT HIRE

---

## EFFORTLESS EVENTING

### The Mint Car Park

Your guests can enjoy convenient and secure parking directly behind the Hellenic Museum/Former Royal Mint building.

By parking here you're helping support the conservation and management of heritage places across Victoria.

**Working**  
Heritage

